

PART OF N.E. 1/4 OF SEC. 15, T.5N, R.1W, S.L.B. & M
SHADOW VALLEY ESTATES NO. 7

173

TAXING UNIT : 25

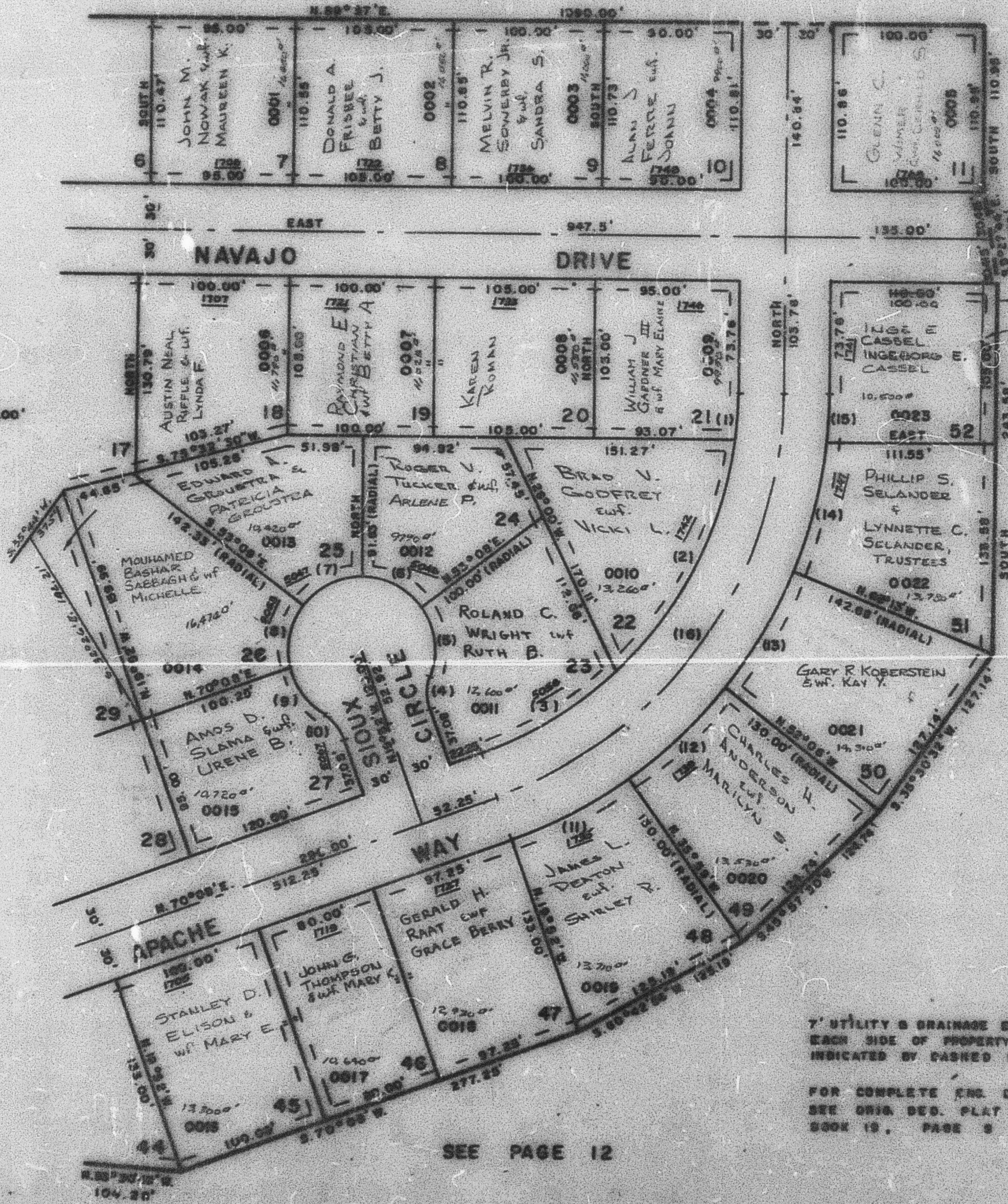
IN OGDEN CITY

PREFIX : 07 - 173

SCALE 1" = 60'

SEE PAGE 12

| CURVE | DATA | |
|-------|-----------|---------|
| | A | L |
| 1 | 7°02'17" | 31.31' |
| 2 | 39°12'24" | 174.41' |
| 3 | 23°53'19" | 106.29' |
| 4 | 41°24'35" | 21.68' |
| 5 | 58°24'38" | 50.97' |
| 6 | 53°08' | 46.37' |
| 7 | 53°09' | 46.38' |
| 8 | 30°58'19" | 44.48' |
| 9 | 47°09'18" | 41.15' |
| 10 | 41°24'35" | 21.68' |
| 11 | 16°07' | 88.58' |
| 12 | 16°07' | 88.58' |
| 13 | 16°07' | 88.58' |
| 14 | 16°03'52" | 88.48' |
| 15 | 5°41'35" | 31.29' |
| 16 | 70°08' | 348.76' |



SEE PAGE 172

SEE PAGE 12

SEE PAGE 12

7' UTILITY & DRAINAGE EASEMENTS EACH SIDE OF PROPERTY LINE AS INDICATED BY DASHED LINES.

FOR COMPLETE ENG. DATA SEE ORIG. DES. PLAT IN BOOK 19, PAGE 3